



TECHNOLOGY RELOADED

CONNECT WITH US






Follow Us On Twitter Follow Us On Facebook Subscribe To RSS Feed Get Free Email Updates

HOME ANDROID DOWNLOADS IPHONE TECH WINDOWS 7 WINDOWS 8 CONTACT

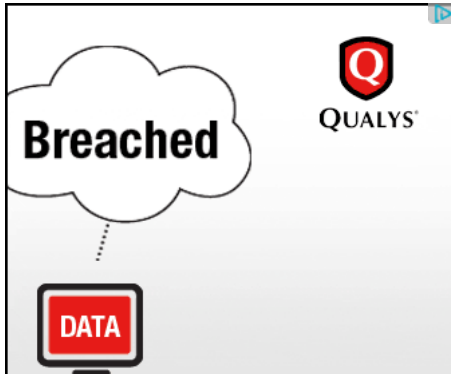
Search

How To Setup ADB (Android Debug Bridge) On Windows

Posted by dkszone on November 17, 2010

Advertisement

Send us a Tip! - admin@dkszone.net



There are many useful apps in Android market using which you can do more things. But many of these popular apps need root access to your [android](#) phone. Root access is restricted by manufacturer due to security reasons, hence you need to root android.

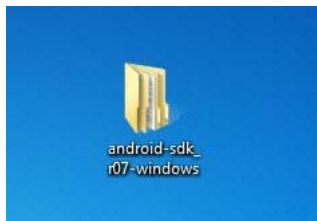
Before rooting Android devices one should install and setup ADB (Android Debug Bridge) on your PC. We show you procedure for [Samsung Galaxy S](#) (GT I9000) android phone, although it should [work](#) for other Android devices too.

Here is a step-by-step guide on how to setup ADB on your Windows 7 PC and debug your Android device.

1. Download and install [Java SE Software Development Kit \(SDK\)](#). Make sure you download the package by clicking on first icon named Java Platform (JDK).



2. Download [Android Software Development Kit \(SDK\)](#) depending upon your OS and extract the zip content to your desktop.



3. Open the folder and then double-click on "SDK Manager". From the packages to install list double-click on "USB [Driver](#) package, revision..". You can choose to deselect all items except USB Package if you have slower internet download speed. Click "Install" and wait for the installation to finish.

This webpage is not available



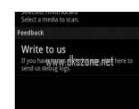
Google Chrome's connection attempt to [www.facebook.com](#) was rejected. The website may be down, or your network may not be properly configured.

Here are some suggestions:

- [Reload](#) this webpage later.
- Check your Internet connection. Restart any router, modem, or other network



Latest Articles



Undelete for Android: Recover Deleted Files from SD Card,...



Install Android 4.0.1 ICS (Ice cream Sandwich) on Galaxy



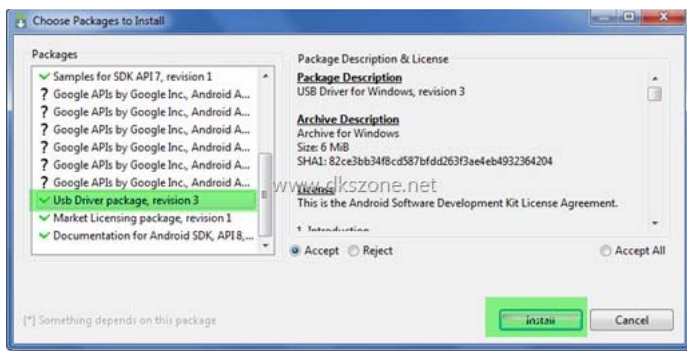
Root Nook Tablet Permanently [How To]



How to use Google Music from Any Country (Outside USA)



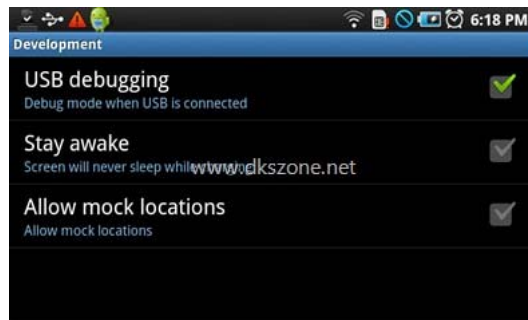
Root Kindle Fire with SuperOneClick [How To]



4. On your Android device (Samsung Galaxy S in our case), go to:

Applications → Settings → Applications → Development

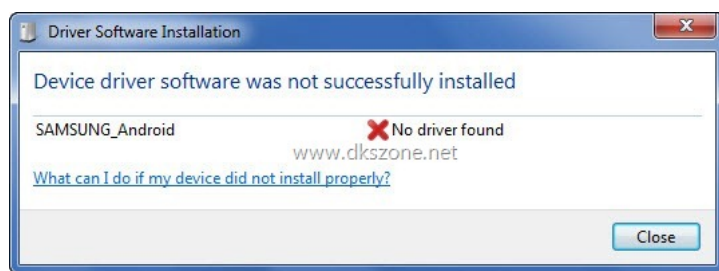
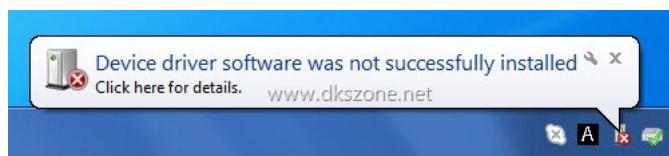
Turn ON "USB debugging" mode.



5. Connect the android phone to PC by using the USB connection.

6. Windows will start recognizing the device. You will then see a message "Device driver software was not successfully installed". Clicking on the message will lead to another popup that says "SAMSUNG_Android" driver was not found. The message varies depending the Android model and brand. Ignore the message and click "Close".

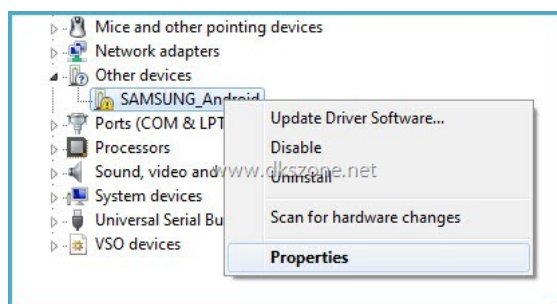
Instead if you see "Device installed successfully", jump to STEP:15!



7. Click "Start" → right-click on "Computer" → "Manage" (You need to have admin rights to do this on your PC).

8. Expand the tree in left pane by clicking on System Tools → Device Manager.

9. In the right pane, expand "Other devices". You will see a yellow exclamation mark on the device icon. Right-click on it and select "Properties".



10. In the following window, click on "Update Driver" button.



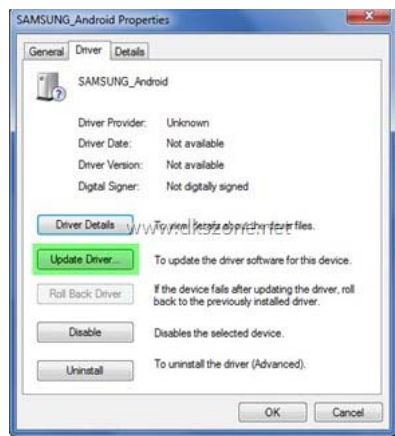
This
webpage is
not available



Google Chrome's connection attempt to **www.facebook.com** was rejected. The website may be down, or your network may not be properly configured.

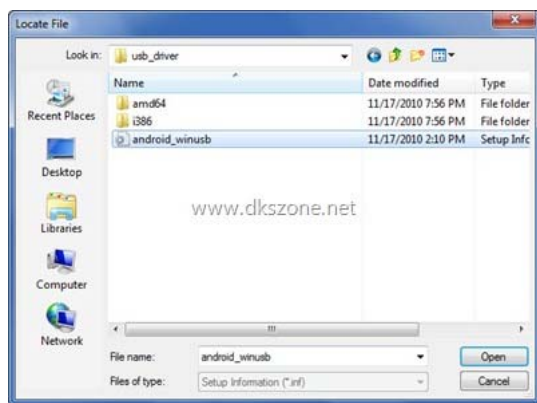
Here are some suggestions:

- [Reload](#) this webpage later.
- Check your Internet connection. Restart any router, modem, or other network devices you may be using.
- Add Google Chrome as a permitted program in your firewall's or antivirus software's settings. If it is already a permitted program, try deleting it from the list of permitted programs and adding it again.

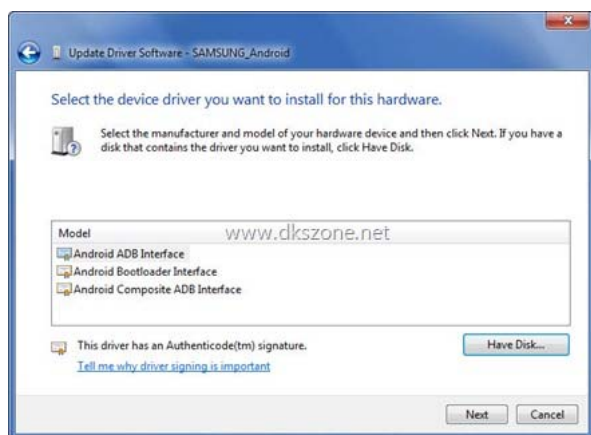


12. Select "Browse my computer for driver software" and then select "Let me pick from list of device drivers on my computer".

13. Click "Next"—>"Have disk", browse through and select "android_winusb" item as shown below.



14. Click "Next". Windows will confirm whether to update drivers. Go ahead and click "Yes".



15. Windows should successfully finish the driver software for your android phone.



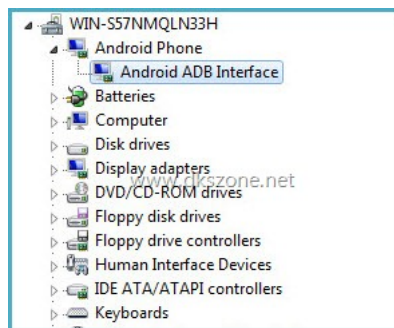
You are done with ADB installation. To verify, connect android device to your computer and then "Start"→ right-click on "Computer"→ Manage.

In the left pane, click on "System Tools"→ "Device Manager".

In the right pane, expand "ADB Interface". Your device will be listed. In our case, it is shown as "SAMSUNG Android Composite ADB Interface". In most cases, it shows "Android ADB Interface" which implies successful ADB setup.



-OR-



PEOPLE WHO READ THIS ALSO READ.....



[Root Kindle Fire with](#)



[How To Root](#)



[ADB GUI Desktop](#)



[Setup NookColor ADB](#)



[How To Root](#)

PREVIOUS

Install Apps On Android By Scanning A Barcode [QR Code Scanner]

NEXT

How To Copy Files To Android SD Card Over ADB From Send To Right Click Context Menu In Windows

Like

3 people liked this.

Add New Comment

Optional: Login below.

Post as ...

Showing 17 comments

Sort by Newest first

Subscribe by email


Subscribe by RSS

 **Diego_bravado** 2 days ago

ANY IDEA HOW TO DO ON WINDOWS XP SP3 BECAUSE ON MY [SYSTEM](#) THE JDK IS NOT GETTING [INSTALLED](#) ?

Like


Reply

 **Samuel** 4 weeks ago

great post!,,,

Like


Reply

 **Guest** 3 months ago

Doesn't work with Windows XP

Like

Reply

 **Petermyintsoe** 4 months ago

Thanks so much, it is the great post and I have set up ADB for my Samsung Galaxy S Vibrant and rooted my device.

Like


Reply

 **Willen** 4 months ago

That's great but the CDC Serial remains uninstalled here and I can't figure out a way to have install it. Any ideas?

Like


Reply

 **Michael Biermann** 4 months ago

That's a great post.
Especially the USB driver section helps to make your Galaxy 10.1 visible in Eclipse "Android Device Chooser".

Like


Reply

 **SpecialFX** 9 months ago

Thank you for this! I was trying from the google page instructions and it left out that [your phone](#) has to be in debugging mode for Windows to update the drivers.

Like

Reply


 **Burak Arslan** 9 months ago

Android Software Development Kit (SDK) link does not work.

1 person liked this.

Like


Reply

**Juno** 10 months ago

good instructions, which resolved my problems.

Like

Reply

**infero** 10 months ago


Thanks for this detailed help.

I'd like to have such a good trouble shooting help in the google installation documentation...

1 person liked this.

Like


Reply

**smijo** 10 months ago

Thank you..!

Like


Reply

**Fletch** 10 months ago

Yes...do a google search and you will find these instructions above leave out critical parts of the installation about having to manually update the usb.inf file with the proper memory locations. Basically once the driver install fails, you look at properties to get the correct mem address, "THEN" you edit the .inf file of the dev driver with the correct address/ I had to update the address in 2 locations and then it started working. Also another way that might be easier is to install pdanet application as that seemed to work on another machine. I like android but it is still not yet 100% end user ready.

Like


Reply

**Raj** 10 months ago

Thank you very much Kiran !!

Like


Reply

**Fletch** 12 months ago

If it were only this simple and this actually worked...but windows refuses to accept the adb driver even doing it your way.

Like

Reply

**Andi** 10 months ago in reply to Fletch

Hello Fletch,

that's exactly the problem I have. Windows refuses to accept the ADB driver. Do you have a solution meanwhile?


BR,

andi.

2 people liked this.

Like


Reply

**Webstman** 2 months ago in reply to Andi

bye a new fone! by time you finish its from the marked lol

Like

Reply

**Steven** 4 days ago in reply to Webstman

To all you guys & once you have installed the ADB & USB. Make sure that your Nexus S's 'Wireless & networks' and the 'Tethering & portable hotspots' is set to 'USB tethering' otherwise the internet will not connect up, this is the next problem I had to find out after I installed the ADB & USB! Works like a charm and never have anymore problems! Just connect your Nexus S straight into your computer with the USB cable and 'BanG' instant internet connection! Cheers

Like

Reply



